

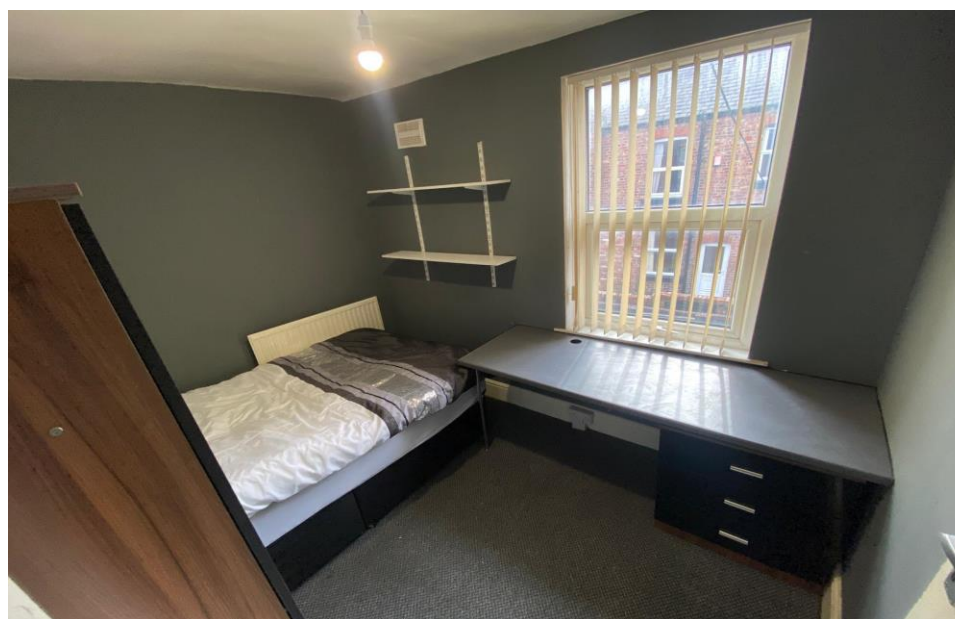


# iCCOMMODATE

Property Management, Lettings and Maintenance

Russell Road  
Liverpool, L18 1EA

**Room Lets £390-430pcm**



Score	Energy rating	Current	Potential
92+	A		
81-91	B		81 B
69-80	C		
55-68	D	59 D	
39-54	E		
21-38	F		
1-20	G		

**\*\* Three Double Bedrooms Available in 7 Bed House Share\*\***

iCCOMMODATE are pleased to offer three double rooms available to rent in this large house share. Seven double bedrooms - varying in size, two separate bathrooms, a large kitchen and shared living area make up this property.

Situated just off Smithdown Road by Penny Lane, with restaurants and bars close by alongside local supermarkets and shops too.

Great transport links to the city centre and surrounding areas, with off road parking make this property a great one!

Rent prices from £390-£430pcm all inclusive of bills (gas, electric, water, broadband and council tax)

One months' rent as deposit and a UK based guarantor is required for all applicant

- Spacious 7 bedroom house share
- Bills included
- Available now
- Suitable for students and professionals

## We do not charge admin fees!!

# TO LET



shutterstock.com • 387717475

Zoopla

nTheMarket.com

[www.iccommodate.com](http://www.iccommodate.com)